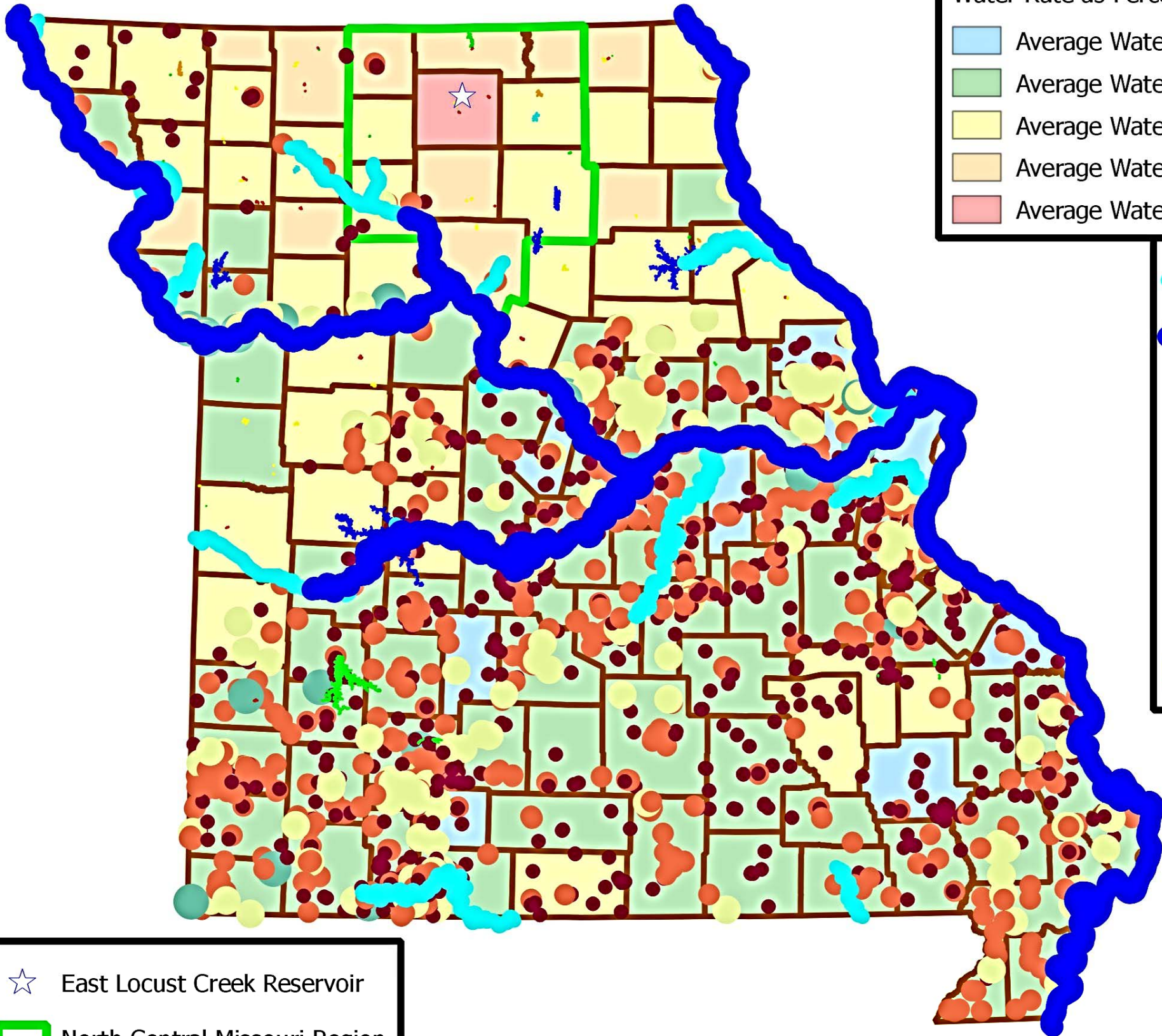


Water Sources and Rates



Water Rate as Percentage of County MHI (MRWA and MPUA data)

- Average Water Rate 0 to 0.5% of County MHI
- Average Water Rate 0.5 to 1.0% of County MHI
- Average Water Rate 1.0 to 1.5% of County MHI
- Average Water Rate 1.5 to 2.0% of County MHI
- Average Water Rate Greater than 2.0% of County MHI

- Rivers with D.A. gt 2000 It 6000 Sq. Mi.
- Rivers with D.A. gt 6000 Sq. Mi.

Existing Active and Emergency Wells

- Yield Between 0 and 0.01 MGD
- Yield Between 0.010 and 0.295 MGD
- Yield Between 0.295 and 0.981 MGD
- Yield Between 0.981 and 2.160 MGD
- Yield Between 2.160 and 7.128 MGD
- Yield Between 7.128 and 18.00 MGD

- East Locust Creek Reservoir
- North Central Missouri Region

Print Date: 04-13-2014

