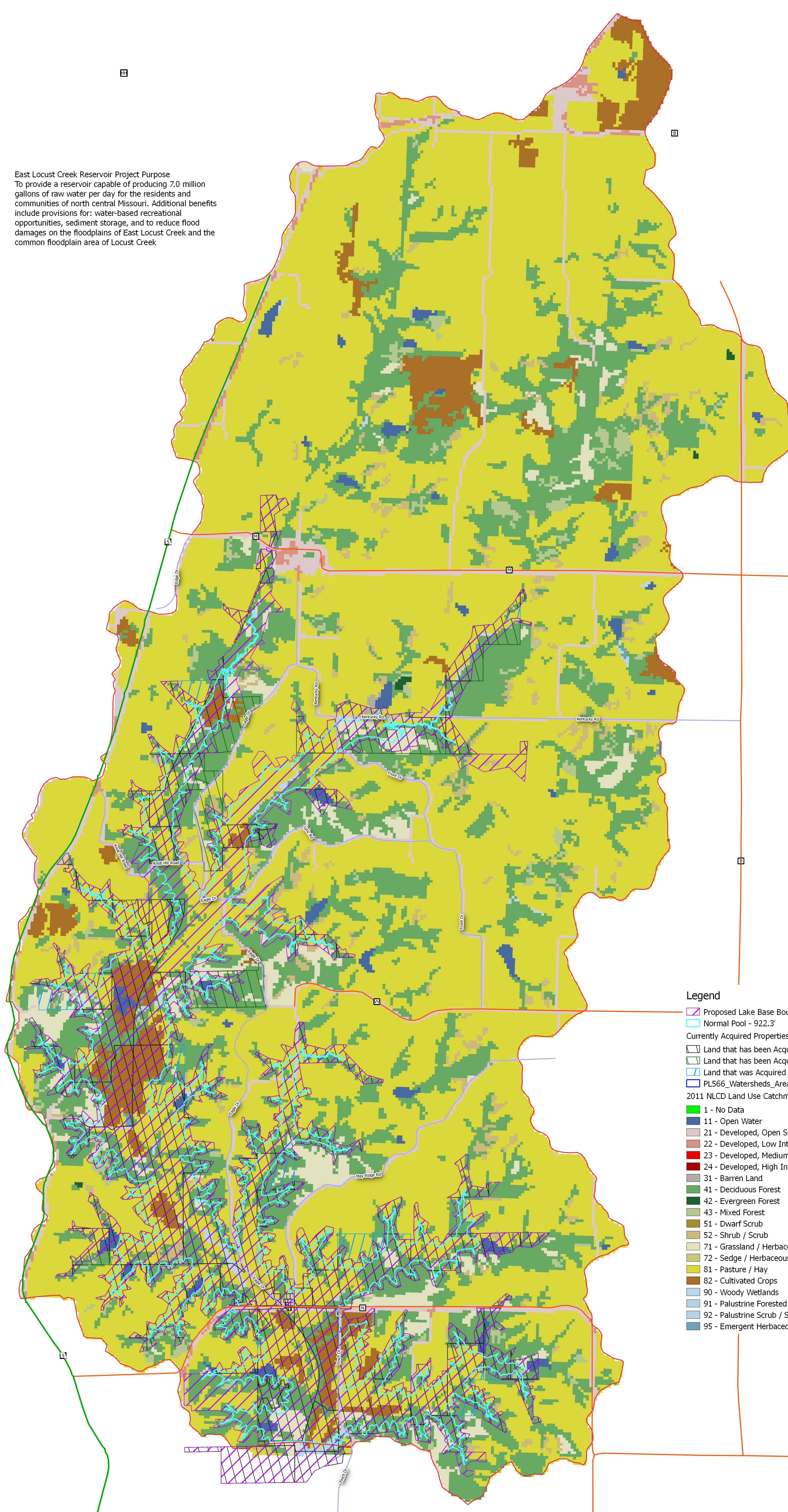


**East Locust Creek Reservoir Project Purpose**  
 To provide a reservoir capable of producing 7.0 million gallons of raw water per day for the residents and communities of north central Missouri. Additional benefits include provisions for: water-based recreational opportunities, sediment storage, and to reduce flood damages on the floodplains of East Locust Creek and the common floodplain area of Locust Creek



**East Locust Creek Reservoir 2011 NLCD Data**

Existing Normal Pool Area			
Class	Area (ac)	Percent	Land Use
11	42	1.8%	Open Water
21	52	2.2%	Developed, Open Space
22	2	0.1%	Developed, Low Intensity
31	0	0.0%	Barren Land (Rock/Sand/Clay)
41	817	35.1%	Deciduous Forest
43	13	0.5%	Mixed Forest
52	24	1.0%	Shrub/Scrub
71	103	4.4%	Grassland/Herbaceous
81	915	39.3%	Pasture/Hay
82	319	13.7%	Cultivated Crops
90	38	1.6%	Woody Wetlands
95	4	0.2%	Emergent Herbaceous Wetlands
	2,329	100.0%	

Existing Base Boundary Area			
Class	Area (ac)	Percent	Land Use
11	79	1.9%	Open Water
21	88	2.1%	Developed, Open Space
22	3	0.1%	Developed, Low Intensity
31	2	0.1%	Barren Land (Rock/Sand/Clay)
41	1,706	39.9%	Deciduous Forest
43	43	1.0%	Mixed Forest
52	60	1.4%	Shrub/Scrub
71	195	4.6%	Grassland/Herbaceous
81	1,688	39.5%	Pasture/Hay
82	332	7.8%	Cultivated Crops
90	67	1.6%	Woody Wetlands
95	6	0.1%	Emergent Herbaceous Wetlands
	4,271	100.0%	

Existing Lake Buffer Area			
Class	Area (ac)	Percent	Land Use
11	37	1.9%	Open Water
21	36	1.9%	Developed, Open Space
22	1	0.1%	Developed, Low Intensity
31	2	0.1%	Barren Land (Rock/Sand/Clay)
41	889	45.8%	Deciduous Forest
43	30	1.6%	Mixed Forest
52	36	1.9%	Shrub/Scrub
71	93	4.8%	Grassland/Herbaceous
81	773	39.8%	Pasture/Hay
82	13	0.7%	Cultivated Crops
90	30	1.5%	Woody Wetlands
95	2	0.1%	Emergent Herbaceous Wetlands
	1,942	100.0%	

Existing Entire Lake Watershed			
Class	Area (ac)	Percent	Land Use
11	197	0.9%	Open Water
21	825	3.9%	Developed, Open Space
22	98	0.5%	Developed, Low Intensity
31	6	0.0%	Barren Land (Rock/Sand/Clay)
41	4,043	23.6%	Deciduous Forest
42	8	0.0%	Evergreen Forest
43	235	1.1%	Mixed Forest
52	394	1.9%	Shrub/Scrub
71	674	3.2%	Grassland/Herbaceous
81	12,777	60.9%	Pasture/Hay
82	760	3.6%	Cultivated Crops
90	62	0.3%	Woody Wetlands
95	9	0.0%	Emergent Herbaceous Wetlands
	20,980	100.0%	

Watershed outside of Base Boundary			
Class	Area (ac)	Percent	Land Use
11	118	0.7%	Open Water
21	735	4.4%	Developed, Open Space
22	95	0.6%	Developed, Low Intensity
31	4	0.0%	Barren Land (Rock/Sand/Clay)
41	3,338	19.9%	Deciduous Forest
42	8	0.1%	Evergreen Forest
43	197	1.2%	Mixed Forest
52	341	2.0%	Shrub/Scrub
71	473	2.8%	Grassland/Herbaceous
81	11,068	65.8%	Pasture/Hay
82	426	2.5%	Cultivated Crops
90	8	0.1%	Woody Wetlands
95	3	0.0%	Emergent Herbaceous Wetlands
	16,814	100.0%	

East Locust Creek Reservoir Entire Watershed Land Use (estimated post construction)			
Class	Area (ac)	Percent	Land Use
11	2,483	11.78%	Open Water
21	735	3.48%	Developed, Open Space
22	95	0.45%	Developed, Low Intensity
31	4	0.02%	Barren Land (Rock/Sand/Clay)
41	5,244	24.87%	Deciduous Forest
42	8	0.04%	Evergreen Forest
43	197	0.93%	Mixed Forest
52	341	1.62%	Shrub/Scrub
71	473	2.24%	Grassland/Herbaceous
81	11,068	52.49%	Pasture/Hay
82	426	2.02%	Cultivated Crops
90	8	0.04%	Woody Wetlands
95	3	0.01%	Emergent Herbaceous Wetlands
	21,085	100.00%	

**Legend**

- Proposed Lake Base Boundary 2015-07-31
- Normal Pool - 922.3'
- Currently Acquired Properties**
  - Land that has been Acquired by NCMRWC
  - Land that has been Acquired by NCMRWC and is available for transfer
  - Land that was Acquired from the original owner and resold
- PL566\_Watersheds\_Areas
- 2011 NLCD Land Use Catchment**
  - 1 - No Data
  - 11 - Open Water
  - 21 - Developed, Open Space
  - 22 - Developed, Low Intensity
  - 23 - Developed, Medium Intensity
  - 24 - Developed, High Intensity
  - 31 - Barren Land
  - 41 - Deciduous Forest
  - 42 - Evergreen Forest
  - 43 - Mixed Forest
  - 51 - Dwarf Scrub
  - 52 - Shrub / Scrub
  - 71 - Grassland / Herbaceous
  - 72 - Sedge / Herbaceous
  - 81 - Pasture / Hay
  - 82 - Cultivated Crops
  - 90 - Woody Wetlands
  - 91 - Palustrine Forested Wetland
  - 92 - Palustrine Scrub / Shrub Wetland
  - 95 - Emergent Herbaceous Wetlands



**East Locust Creek Reservoir Percent Slope from LIDAR DEM**

Job Number: 10144.01      Print Date: 09-16-2015

**ALLSTATE CONSULTANTS**  
CONSULTANTS  
 1000 E. BROADWAY, SUITE 400, ST. LOUIS, MO 63102  
 (314) 433-1000

**NORTH CENTRAL MISSOURI**  
 Regional Water Commission